

BICYCLE PEDESTRIAN MASTER PLAN UPDATE

Project Status & Stakeholder Feedback

FEBRUARY 2019

Forward Pinellas Bicycle/Pedestrian Advisory Committee



**Advantage
PINELLAS**

ENGAGE. ADAPT. CONNECT.



**FORWARD
PINELLAS**
Integrating Land Use & Transportation



BICYCLE & PEDESTRIAN MASTER PLAN UPDATE



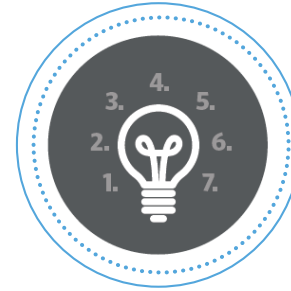
**Existing Conditions
Inventory &
Analysis**



**Pedestrian &
Bicycle Safety
Analysis**



**Stakeholder
Outreach**



**Vision, Goals &
Performance
Measures**



**Network and
Connectivity**



**Project Prioritization
& Concept Summaries**



Final BPMP





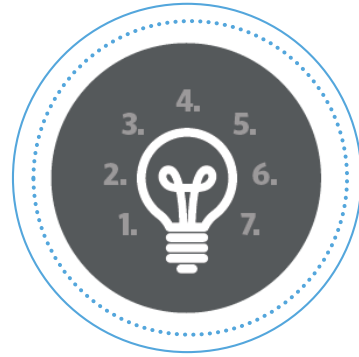
Existing Conditions
Inventory & Analysis



Pedestrian & Bicycle
Safety Analysis



Stakeholder Outreach



Vision, Goals &
Performance Measures

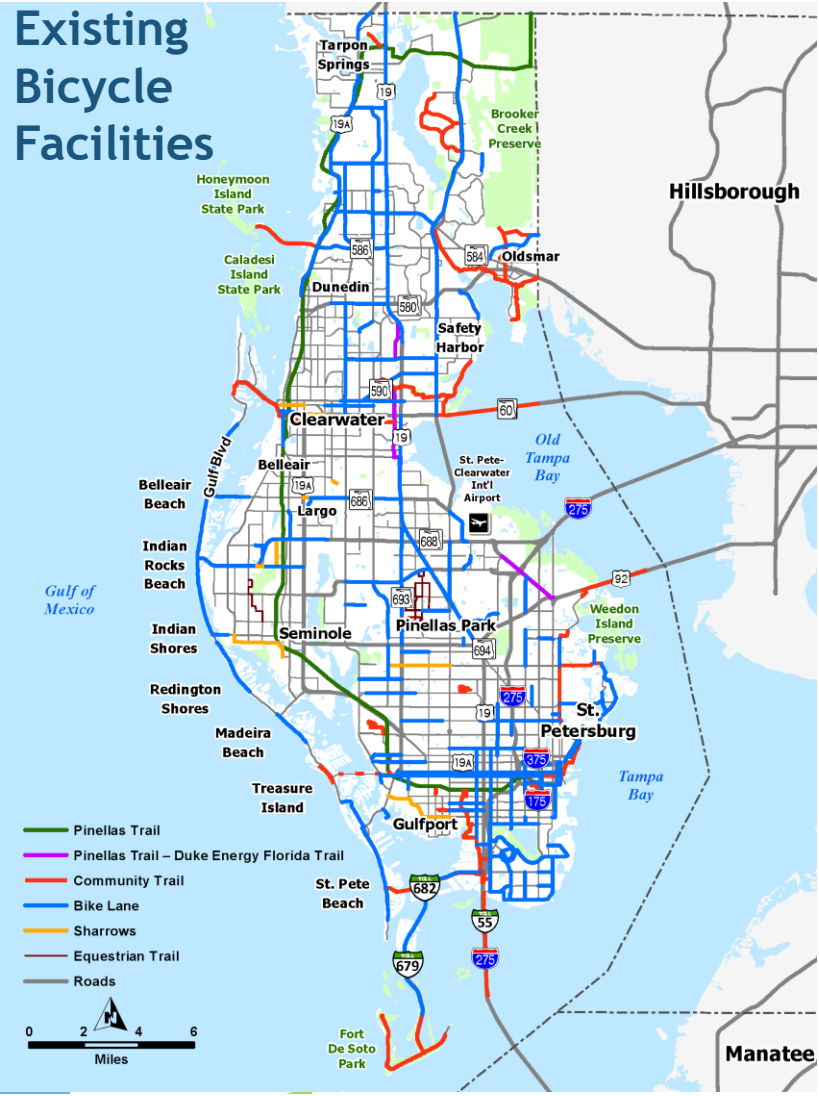


EXISTING CONDITIONS INVENTORY

- ▶ Existing Data & Past Studies
- ▶ Equity Analysis



EXISTING CONDITIONS



187

Miles of Bike Lanes

135

Miles of Trails

1,725

Miles of Sidewalks

EXISTING FACILITY USAGE



Level of Traffic Stress (LTS)

1

ALL AGES & ABILITIES

2

INTERESTED BUT CONCERNED

3

ENTHUSED & CONFIDENT

4

STRONG & FEARLESS



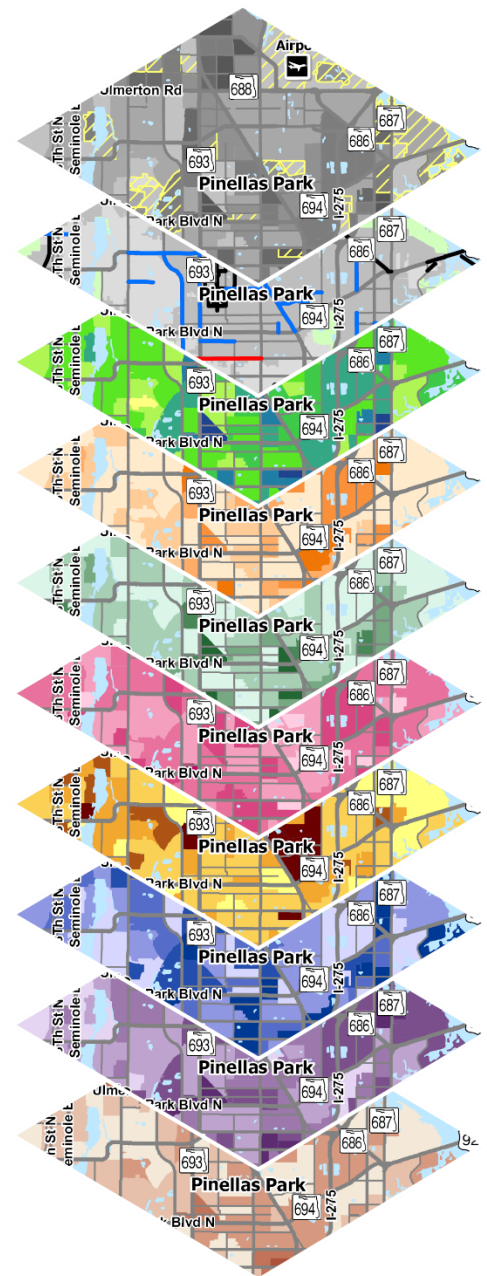
EQUITY ANALYSIS



An Equity Analysis helps prioritize areas in most need of facilities

METHODOLOGY

- ▶ Spatial Analysis of Key Demographic Patterns
- ▶ Compile Resulting Maps to Develop Overall Equity Scores for Areas within County
- ▶ Use Equity Scores Maps and Existing Facilities to Identify Areas of Low Bicycle Service



LOW BICYCLE SERVICE

EXISTING FACILITIES

EQUITY SCORE

NO CAR COMMUTE

ZERO-VEHICLE HOUSEHOLD

POPULATION UNDER 18

POPULATION OVER 65

LIMITED ENGLISH PROFICIENCY POPULATION

MINORITY POPULATION

POPULATION BELOW POVERTY LEVEL

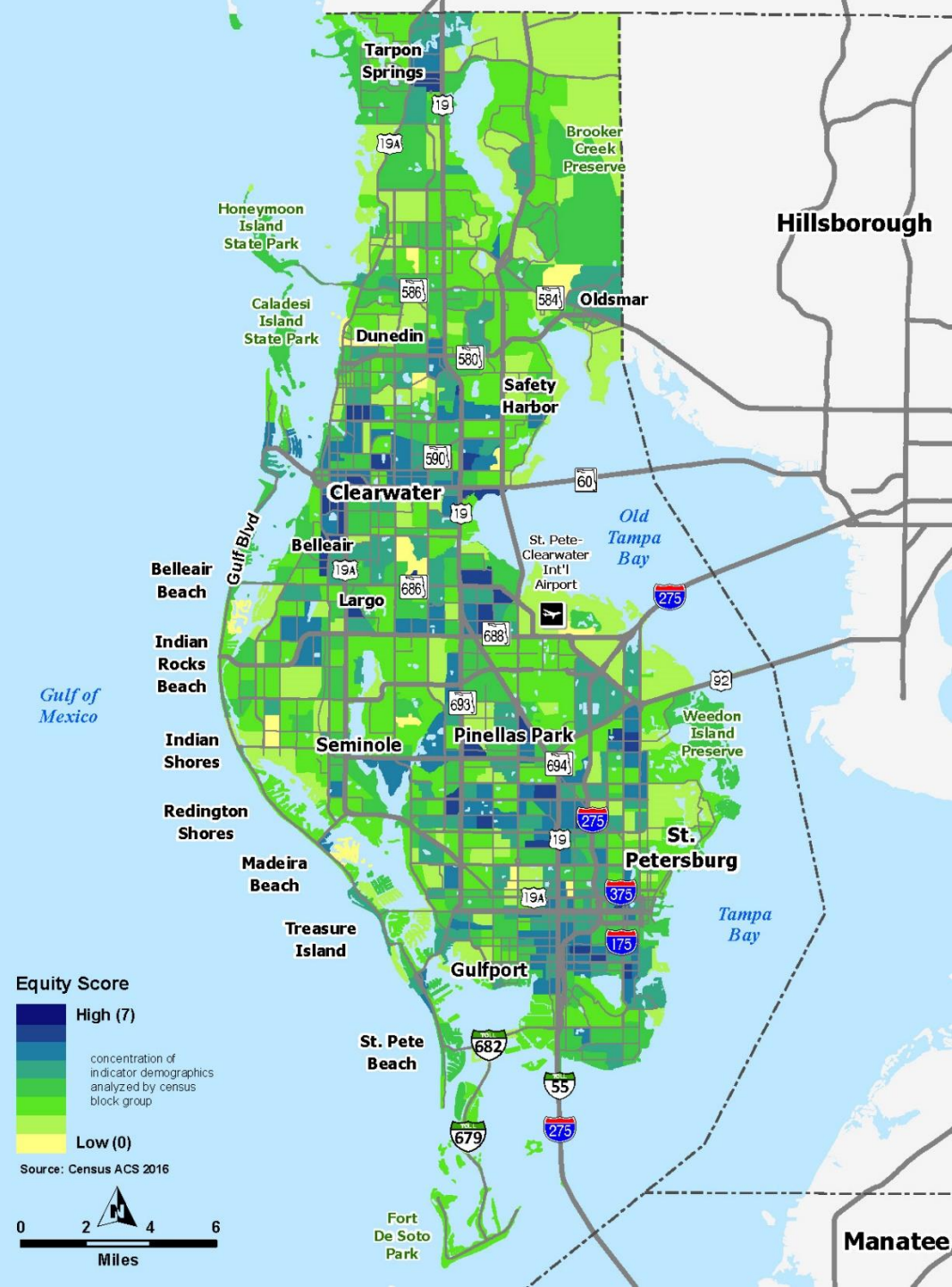


EQUITY SCORES



Higher equity scores are concentrated in St. Petersburg, Clearwater, Largo, and Pinellas Park

- ▶ Darker areas on the map signify locations with concentrated socio-economic indicators (*poverty, minority, LEP, zero-car households, seniors, under 18 populations, other means of travel to work*)
- ▶ Next step will include overlaying this with the existing facilities data to identify areas of Low Bicycle Service



PLANS, STUDIES, & RELATED EFFORTS



FORWARD PINELLAS

- ▶ Bicycle Pedestrian Master Plan
- ▶ Complete Streets
- ▶ Bike Share Feasibility Study
- ▶ Tri-County Connection Study

PINELLAS COUNTY

- ▶ Pedestrian Safety Action Plan
- ▶ Complete Streets Corridor Prioritization

CITY OF ST. PETERSBURG

- ▶ CityTrails Bicycle Pedestrian Master Plan
- ▶ Complete Streets Implementation Plan

CITY OF CLEARWATER

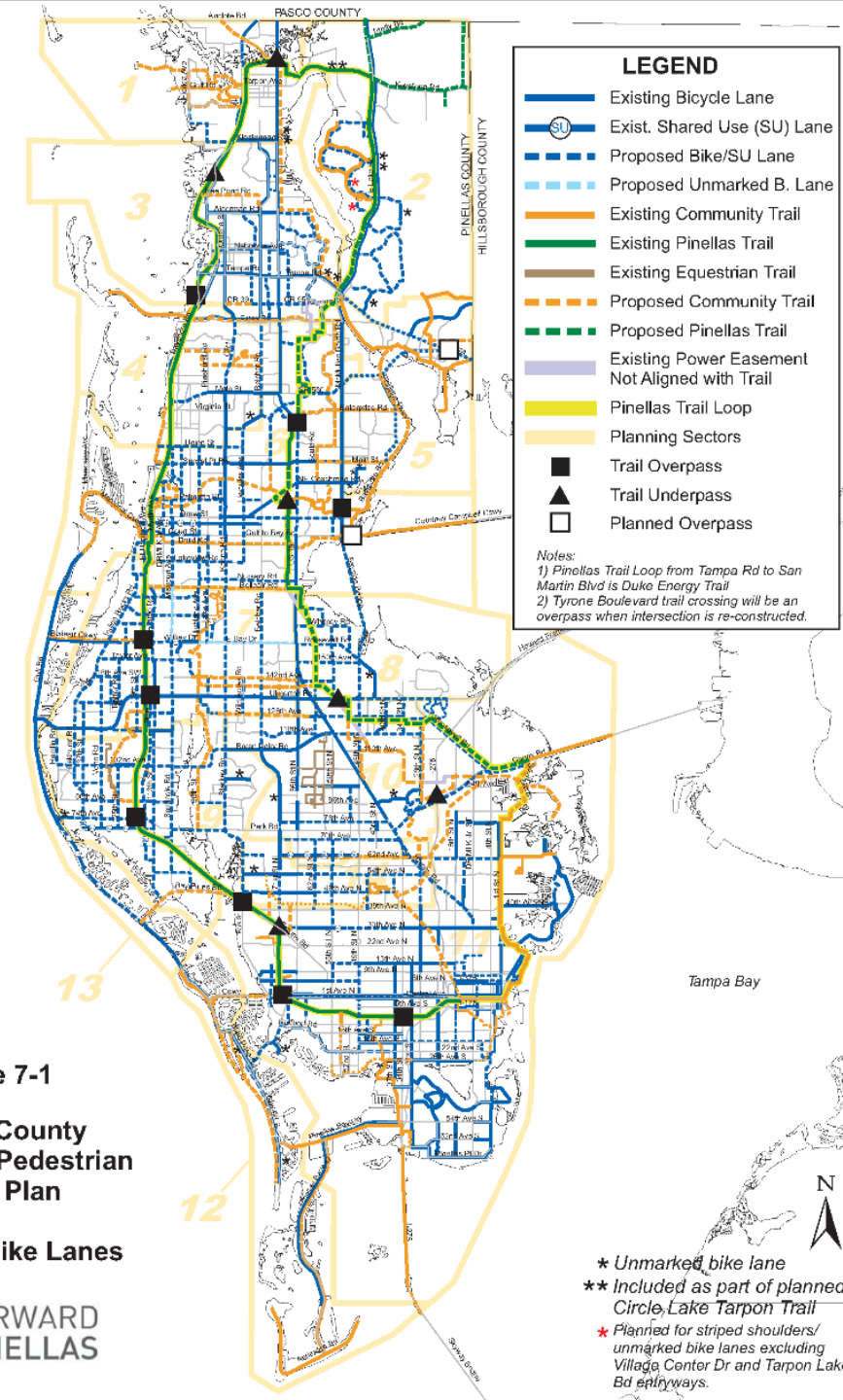
- ▶ Shifting Gears: Bicycle and Pedestrian Master Plan
- ▶ Complete Streets
- ▶ Downtown Redevelopment Plan

CITY OF LARGO

- ▶ Moving Largo Multimodal Plan
- ▶ Downtown Largo Multimodal Plan

OTHER EFFORTS INCLUDING BIKE/PEDESTRIAN COMPONENTS

- ▶ Linking Lealman Mobility Plan
- ▶ Downtown Palm Harbor Master Plan
- ▶ St. Pete Beach Corey Avenue District Vision Plan
- ▶ Madeira Beach Town Center Plan
- ▶ Safety Harbor Downtown Master Plan
- ▶ Dunedin Causeway Bridges PD & E
- ▶ Alt. US 19 North Corridor Studies
- ▶ North Marina Area Master Plan Clearwater





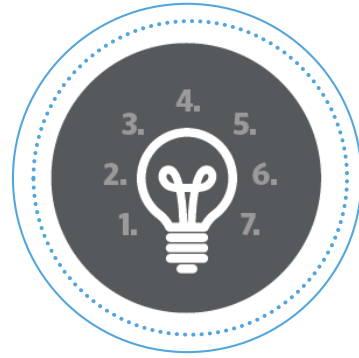
Existing Conditions
Inventory & Analysis



Pedestrian & Bicycle
Safety Analysis



Stakeholder Outreach



Vision, Goals &
Performance Measures

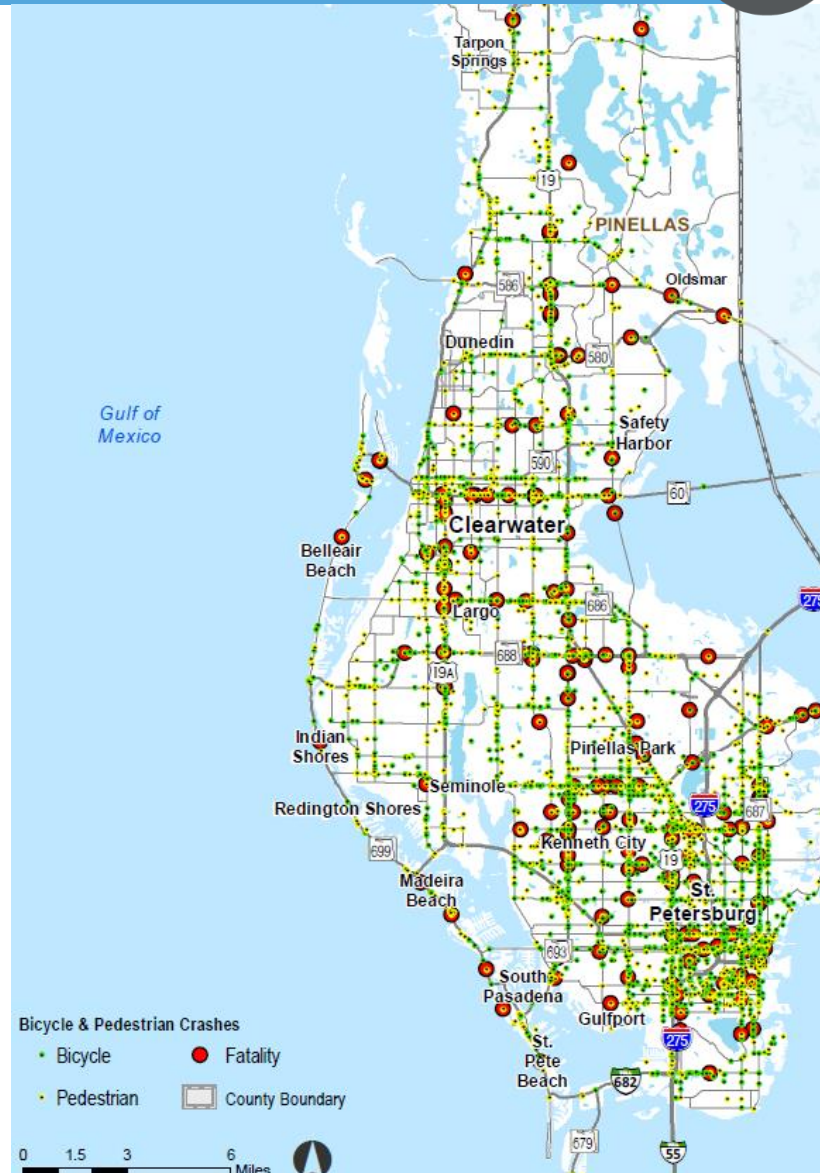
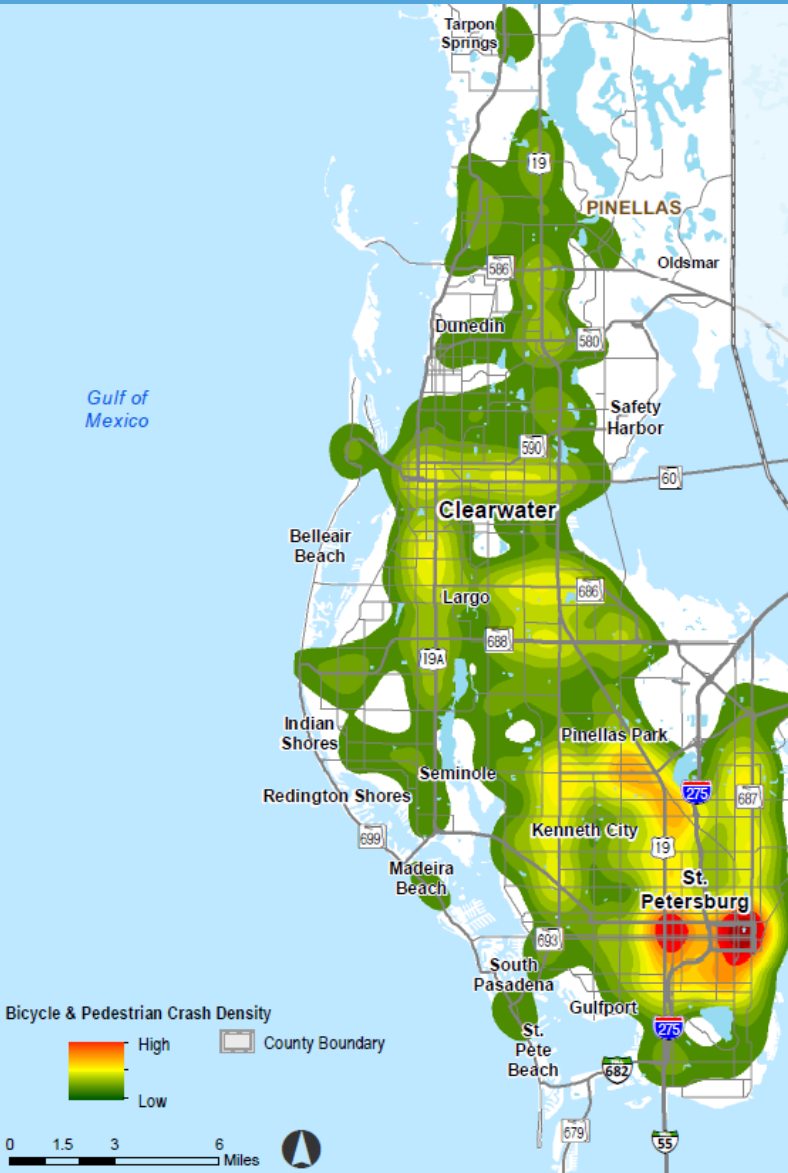


BIKE/PED SAFETY ANALYSIS

- ▶ Crash Records Review
- ▶ Identification of Hot Spots and Problem Corridors
- ▶ Coordinate with Regional Vision Zero Efforts



BICYCLE/PEDESTRIAN CRASHES





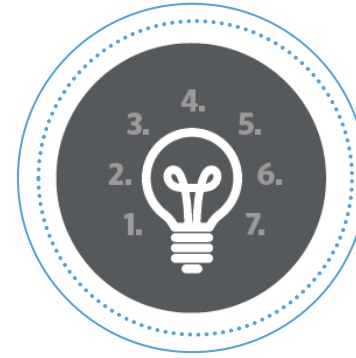
Existing Conditions
Inventory & Analysis



Pedestrian & Bicycle
Safety Analysis



Stakeholder Outreach



Vision, Goals &
Performance Measures

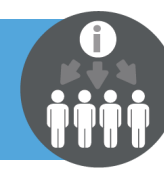


STAKEHOLDER ENGAGEMENT

- ▶ Local Government/Agency Coordination
- ▶ Identification of Local Priorities
- ▶ Information and Data Sharing to Inform Network



STAKEHOLDER MAPPING ENGAGEMENT



Online Mapping Tool & Data Viewer

Help us identify areas on map with missing existing, planned, or proposed bicycle & pedestrian facilities.

Advantage Pinellas: Active Transportation

Places I walk or bike 2

Place I currently ride to

Type of place? Place I currently ride to

Date Submitted 2/20/2019, 9:06 AM

Comments I like riding here.

Esri, HERE, Garmin, INCREMENT P, USGS, METI/NASA, NGA, EPA, USDA



YOUR ASSISTANCE



KEY QUESTIONS TO AGENCIES:

- ▶ Do we have the **most up-to-date** information/data?
- ▶ Is your **community/agency planning anything** that we are not aware of yet?
- ▶ What are your **agency or community priorities**? What is your top focus? What are your top concerns?

IMMEDIATE STAKEHOLDER ACTIONS:

- ▶ Log on to the Map Data Viewer and review information
- ▶ Send us updated GIS data
- ▶ Provide comments or identify potential priorities (Map Comment Tool or via email)



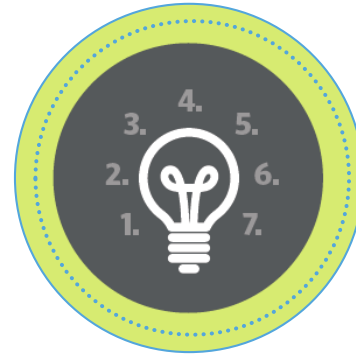
Existing Conditions
Inventory & Analysis



Pedestrian & Bicycle
Safety Analysis



Stakeholder Outreach



Vision, Goals &
Performance Measures



BPMP VISIONING APPROACH

- ▶ Define Shared Vision Themes for Plan Update
- ▶ Identify Focused Goal Themes Supportive to Stakeholders
- ▶ Discuss Performance Measures for Prioritization





GUIDING PRINCIPLES



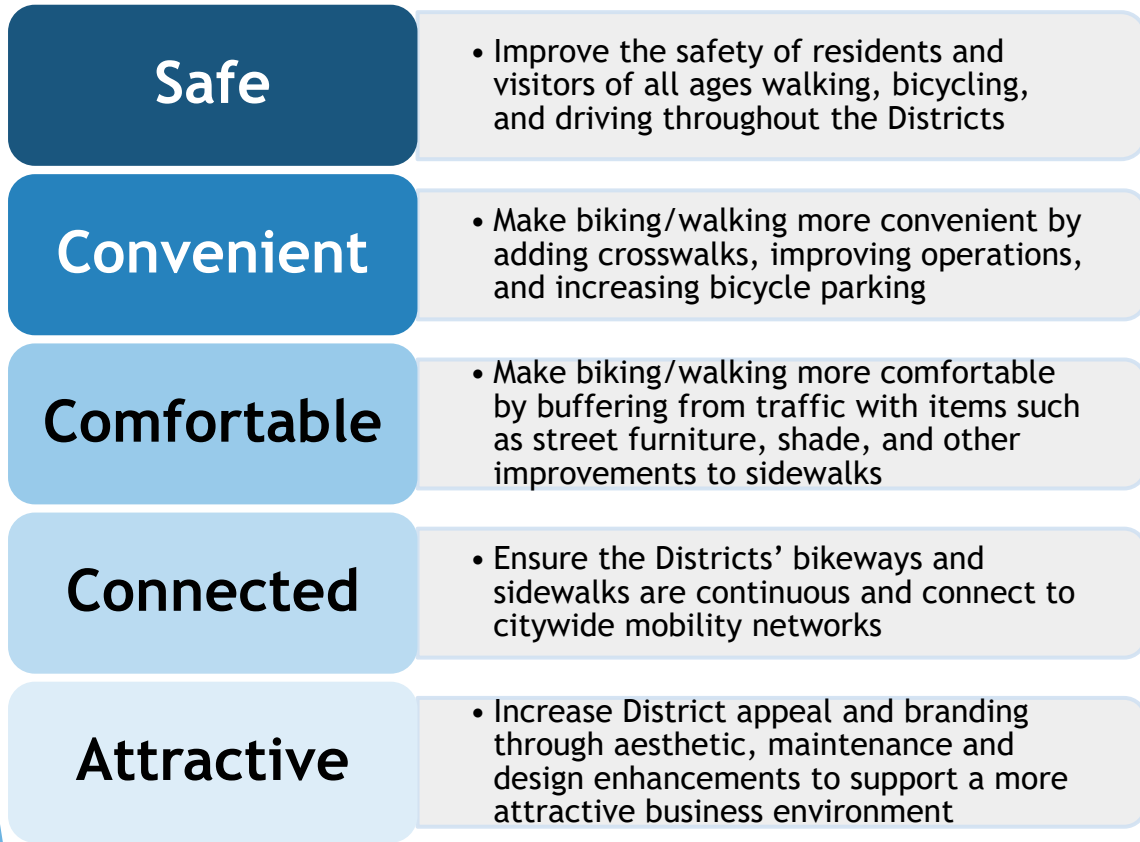
Establish a Vision to use for development of the Goals, Objectives, & Performance Measures

- ▶ Work with stakeholders to identify key vision themes
- ▶ Themes should be based on priorities for each community
- ▶ Develop Goals, Objectives, and Performance Measures

DEVELOPING GUIDING PRINCIPLES



Once a Vision themes are established, they will inform the Goals, Objectives, and Performances Measures of the Plan



Objective	Evaluation Criteria
Goal: Comfortable	
Increase bicyclist comfort	Widening or providing separation of bicycle facilities or providing alternate routes with lower traffic volumes
Improves sidewalk conditions	Improvements such as reducing cross-slope, widening sidewalks, or repairing broken or uneven sidewalks
Mitigates climate conditions	Mitigate the effect of rain or heat by providing shade and/or rain attenuation, increasing tree cover, or decreasing heat island by reducing asphalt coverage

Example: Orlando Main Streets Bicycle & Pedestrian Study



2040 LRTP GOAL



The previous BPMP was directed by the LRTP's Goal 2 (Multimodal Transportation)

OBJECTIVE 2.3: Increase bicycle and pedestrian travel by providing sidewalks, bike lanes, and multiuse trails throughout the county.

- ▶ *Facilitate expansion of bicycle and pedestrian network*
- ▶ *Identify & fill gaps in sidewalk network*
- ▶ *Encourage bike/ped planning in local governments*
- ▶ *Incorporate bike/ped facilities in all roadway design*
- ▶ *Use bicycle pedestrian master plan as authority on trails*





METRIC DEVELOPMENT



Measures track the quantity and quality of new/expanded facilities, programs, and the results through time

KEY PERFORMANCE MEASURES MAY INCLUDE:

- ▶ Miles of paths, sidewalks, bike lanes
- ▶ Ridership
- ▶ Number of bike/ped crashes, injuries and fatalities
- ▶ Ratio of male and female bicyclists
- ▶ Number of bike share or bike library systems
- ▶ Number of Bicycle Friendly Community, University and Business applications and designations

L RTP MEASURES



Example Bicycle & Pedestrian Measures from 2040 LRTP

- ▶ % of Work Trips using Alternate Modes
- ▶ % of centerline miles of major road network with bicycle lanes on both sides
- ▶ % of centerline miles of major road network with sidewalks on at least one side
- ▶ % of centerline miles of major road network with sidewalks on both sides
- ▶ % of centerline miles within major activity centers with sidewalks on both sides of the road
- ▶ % of Pinellas Trail Loop completed
- ▶ Frequency of fatal and/or incapacitating crashes involving bicycles
- ▶ Rate of fatal and/or incapacitating crashes involving pedestrians
- ▶ Frequency of fatal and/or incapacitating crashes involving pedestrians





Seattle Bicycle Pedestrian Master Plan Performance Measures (Categories)

- ▶ More Bicyclists
- ▶ Fewer Collisions
- ▶ Network Completion
- ▶ More Bike Racks
- ▶ Distribute Bike Maps
- ▶ Increase Grant Funding
- ▶ Increase Staff Training
- ▶ More Spot Improvements

Corpus Christi Bicycle Master Plan Performance Measures (Categories)

- ▶ Improve Quality of Bicycle Infrastructure
 - ▶ *% build out of Bicycle Mobility Network*
 - ▶ *Miles of bike infrastructure built per capita*
 - ▶ *Annual municipal capital spending*
 - ▶ *% of negative community feedback*
- ▶ Increase Bicycle Safety
- ▶ Track Bicycle Demand





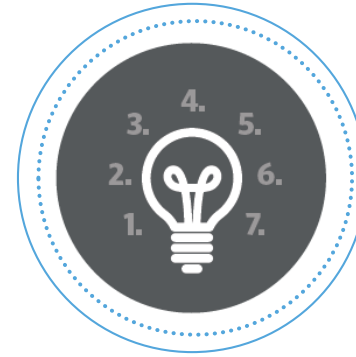
Existing Conditions
Inventory & Analysis



Pedestrian & Bicycle
Safety Analysis



Stakeholder Outreach



Vision, Goals &
Performance Measures



STAKEHOLDER FEEDBACK TIME

Help us identify priorities to inform the plan principles

- ▶ Take out smart phones!
- ▶ Go to www.menti.com and enter the code **69 31 09**





Network and Connectivity



Project Prioritization &
Concept Summaries



Final BPMP

NEXT STEPS

- ▶ Facilities Reference Matrix
- ▶ Gap & Demand Analysis
- ▶ Proposed Network Improvements
- ▶ Project Prioritization
- ▶ Project Concept Summaries



PROJECT SCHEDULE



2019

	J	F	M	A	M	J	J	A	S	O	N	D
Existing Conditions												
Stakeholder Outreach												
Visioning												
Safety Analysis												
Connectivity												
Concepts & Prioritization												
Final BPMP												

**The BPMP Update will be developed in coordination with other Advantage Pinellas efforts including the LRTP update.*



Next BPAC Meeting - March 18, 2019

WORK SESSION HELD IN CONJUNCTION WITH BPAC

- ▶ Review input received from public and agencies via the Online Tool
- ▶ Review additional safety analysis results, gap & demand analysis results
- ▶ Discuss draft Vision, Goals & Performance Measures
- ▶ Discuss preliminary Bike/Ped Network Improvement concepts
- ▶ For questions, please contact:



Susan Miller
Bicycle Pedestrian Planner, Forward Pinellas
Smiller@forwardpinellas.org

